

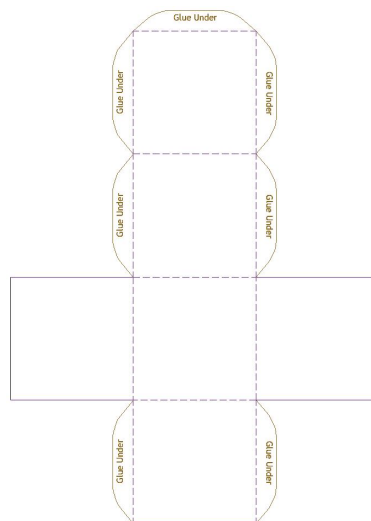
Worksheet 32: Story Cube Template



Student name: _____

Teacher: _____ Class: _____

1. Download a story cube template from the Internet, or use the template provided below as a guide.
2. Prepare the template on A3 paper. Each side of the cube will include your written (or typed) response to a different aspect of the TV series, based on the list below.
3. Before assembling the cube, complete/design each side of the cube using words and images. Each side is to represent a different aspect of **Lockie Leonard** using the following:
 - Side one: title and image representing the series.
 - Side two: a brief plot summary (capturing the main issues for the series or an episode).
 - Side three: favourite character, including name, background information (age, description etc), reasons for liking him or her. Some of this could be done visually.
 - Side four: favourite location (description in words or visual representation).
 - Side five: a brief summary of the student's favourite scene (including page reference).
 - Side six: five interesting snippets of dialogue from the series/episode.
4. After assembling your cube using glue and sticky tape, share with your class, for example, attach string to one corner of the cube and then hang from the ceiling of the classroom.



Worksheet 32: Story Cube Template (Page 2)

